

Historic, Archive Document

Do not assume content reflects current scientific knowledge, policies, or practices.



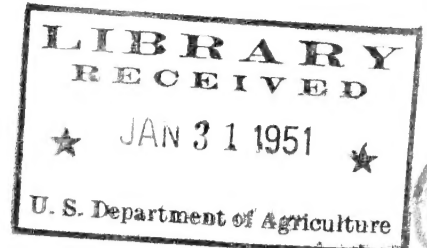
62,17

1951

Monticello Nursery Co.

"HOME OF THE FAMOUS MAHAN PECAN"

MONTICELLO, FLORIDA



The State of Florida has honored Mr. Fred A. Mahan, owner of the Monticello Nursery Co., by naming the Highway between Monticello and Tallahassee, Fla. "The Fred Mahan Drive."

For many years Mr. Mahan has furnished plants and supervision to landscape this 26 mile stretch of highway with many thousands of plants and trees, and it is known as one of the most attractive roads in the State.

Above is one of the bronze markers that have been placed at each end of the Fred Mahan Drive.

U. S. DEPARTMENT OF AGRICULTURE
LIBRARY
WASHINGTON 25, D. C.
OFFICIAL BUSINESS
PRINTED MATTER

PENALTY FOR PRIVATE USE TO AVOID
PAYMENT OF POSTAGE, \$300.
(GPO)

Library, U. S. Dept. of Agriculture,
WASHINGTON 25, D. C.

SO THAT YOU MAY KNOW THE PEOPLE YOU DO BUSINESS WITH



Frank Conklin, Jr.
Asst. Field Mgr.



A. N. Watson
Sales Manager



Edward Abbott, Jr.
Camellia Specialist



Mrs. Helen Murdock
Bookkeeper

Fred A. Mahan



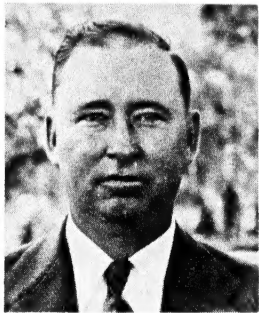
Owner & Mgr.



Mrs. Fred A. Mahan
Office Mgr.



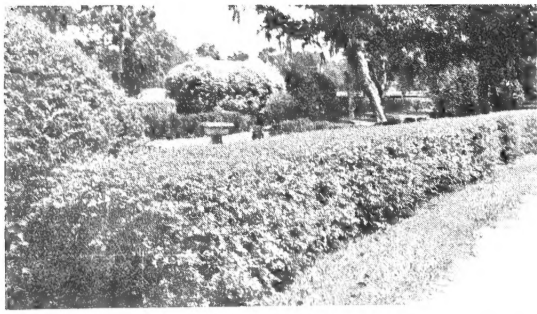
Calvin Mathis
Asst. Propagator



Woodrow Malloy
Chief Propagator



A. E. Montgomery
Order Clerk



ABELIA GRANDIFLORA (Glossy Abelia)
Glossy leaves on purplish red stems. Pinkish white flowers during the summer. Disease and insect free. Excellent for border, hedge or mass planting.

Bare Root	Each
18-24 in.25
2- 3 ft.35
3- 4 ft.50
B&B Double above prices.	



ARDISIA CRENULATA (Christmas Berry).
Compact evergreen shrub with thick dark green foliage and a mass of red berries. Likes a shady situation.

8-12 in. B&B75
12-18 in. B&B	1.00
18-24 in. B&B	2.00
2- 3 ft. B&B	3.00

BERBERIS ATROPURPUREA (Red Leaf Barberry). Evergreen in the lower south, red foliage in spring turning to purplish red late in season.

12-18 in. B&B75
18-24 in. B&B	1.10
2- 3 ft. B&B	1.50



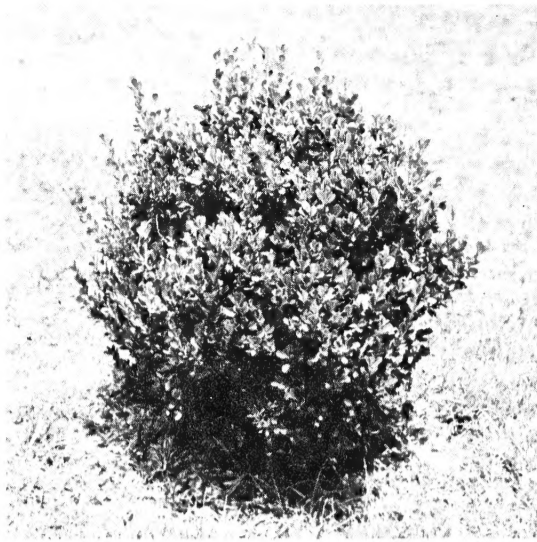
BERBERIS SARGENTIANA (Sargents Barberry). Evergreen barberry with thorns. Medium habit of growth. Good for base plantings, also borders.

12-18 in. B&B75
18-24 in. B&B	1.10
2- 3 ft. B&B	1.50



BUXUS HARLANDI (Korean Boxwood). Dark green elongated leaves, rather square at the ends. Grows thick and round naturally and requires very little pruning.

8-12 in. B&B60
12-15 in. B&B85
15-18 in. B&B	1.50



BUXUS JAPONICA (Japanese Boxwood). Rather fast growing for a boxwood, compact evergreen shrub well suited to southern climate.

BUXUS SEMPERVIRENS (English Boxwood). The very popular variety so much used for edging and formal gardens. Glossy, dark green foliage. Price above two varieties.

8-12 in. B&B55
12-15 in. B&B85
15-18 in. B&B	1.50
18-24 in. B&B	2.50



CLEYERA JAPONICA. A fine evergreen shrub with rather thick glossy leaves and creamy white fragrant flowers. Berries red in early fall.

12-18 in. B&B80
18-24 in. B&B	1.50
2- 3 ft. B&B	2.00
3- 4 ft. B&B	3.00



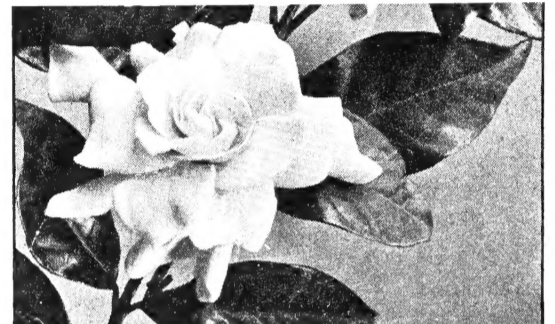
ELEAGNUS PUNGENS. Rather fast in growth. Leaves silvery underneath and has very fragrant small blooms in the fall followed by fruits turning reddish bronze. Fruits are edible.

18-24 in. B&B	1.25
2- 3 ft. B&B	2.00
3- 4 ft. B&B	3.00



FEIJOA SELLOWIANA (Pineapple Guava). A hardy compact evergreen shrub with gray green foliage. Purplish red flowers.

18-24 in. B&B	1.50
2- 3 ft. B&B	2.00
3- 4 ft. B&B	3.50



GARDENIA FLORIDA (Cape Jasmine). The well-known Gardenia of the South. Waxy white very sweet scented flowers and shiny dark green foliage.

12-18 in. B&B	1.00
18-24 in. B&B	1.25
2- 3 ft. B&B	1.50

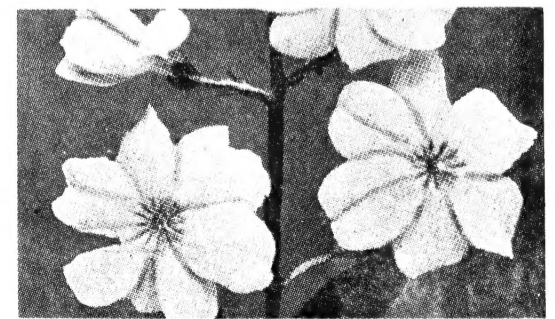
ILEX CORNUTA (Chinese Holly). Evergreen shrub with shining leaves and strong spines. Blooms in June and July. Scarlet berries.

12-18 in. B&B	1.25
18-24 in. B&B	1.75
2- 3 ft. B&B	2.50



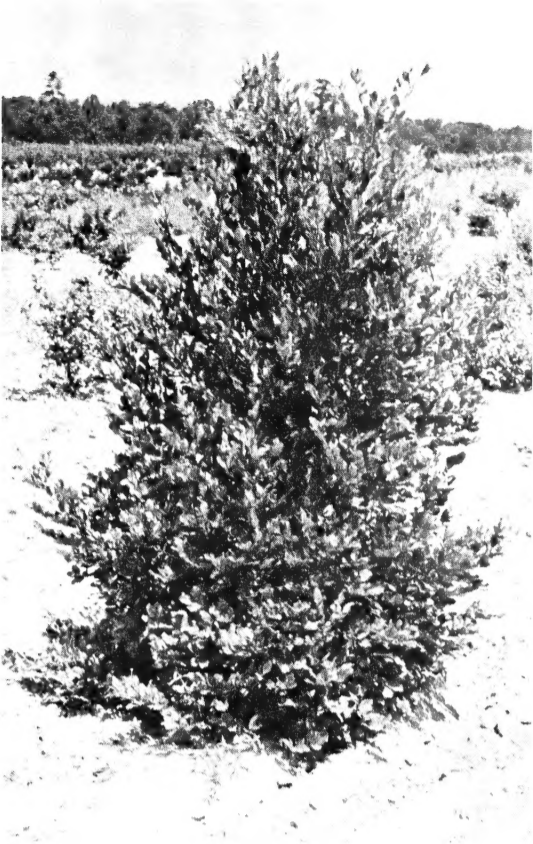
ILEX VOMITORIA (Yaupon). A native evergreen Holly with small olive green foliage and bright red berries along the limbs. Can be pruned for hedges or specimen plants.

18-24 in. B&B	1.50
2- 3 ft. B&B	2.00
3- 4 ft. B&B	3.00
4- 5 ft. B&B	4.00
5- 6 ft. B&B	6.00
6- 8 ft. B&B	10.00



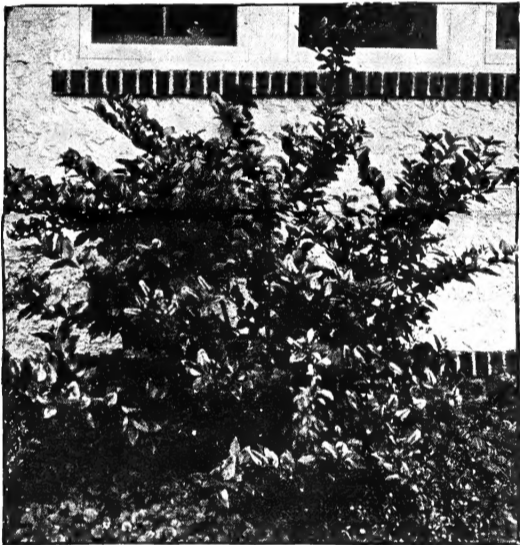
JASMINUM PRIMULINUM (Primrose Jasmine). Graceful, drooping branches and yellow primrose like flowers in late winter and early spring.

18-24 in. Bare Roots75
2- 3 ft. Bare Roots	1.00
3- 4 ft. Bare Roots	1.50



LAUROCERASUS CAROLINIANA (Cherry Laurel). A splendid native evergreen tree with bright shiny leaves. May be used as shade trees where unpruned, or can be sheared to cones and hedges.

2-3 ft. B&B	2.00
3-4 ft. B&B	2.50
4-5 ft. B&B	4.00



LIGUSTRUM LUCIDUM (Waxed Leafed Ligustrum). Very bushy evergreen with dark green waxy leaves and panicles of white flowers followed by large bunches of black berries. One of the basic landscape plants and can be used for many purposes.

18-24 in. B&B	1.00
2- 3 ft. B&B	1.50
3- 4 ft. B&B	2.50



MAHONIA BEALI (Japanese Holly Grape). Thick green deeply serrated foliage spread out Nandina fashion. Clusters of yellow flowers in winter are followed by purple berries. Does best in some shade.

12-18 in. B&B	1.50
18-24 in. B&B	2.00
2- 3 ft. B&B	3.50



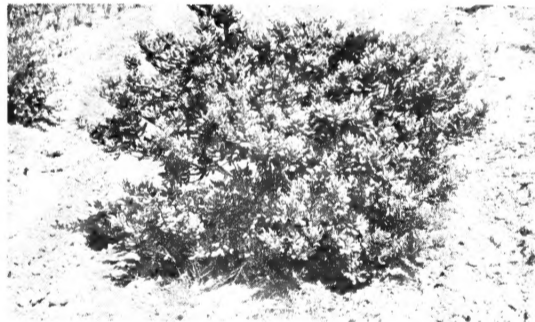
NANDINA DOMESTICA. The well-known red berried plant. Plants in sun have red foliage in winter also; turning back green in the spring.

12-18 in. B&B	1.00
18-24 in. B&B	1.50
2- 3 ft. B&B	2.00
3- 4 ft. B&B	3.50



OLEA FRAGRANS (Tea Olive). Evergreen with small, white fragrant flowers that blooms nearly all winter. Moderate growth.

12-18 in. B&B	1.25
18-24 in. B&B	2.00
2- 3 ft. B&B	3.50



PITOSPORUM TOBIRA. A splendid evergreen shrub with shiny dark green foliage. Can be pruned to any desired size or shape and does well in sun or shade.

12-18 in. B&B	1.25
18-24 in. B&B	1.75
2- 3 ft. B&B	2.75

PHOTINA GLABRA. New growth of this plant is vivid red and very attractive among other evergreens. Should be clipped often to induce new growth.



PHOTINIA SERRULATA. Another variety that has a pinkish new growth, also serrated leaves. More compact growth and heavier leaves than the glabra. Prices above two varieties.

18-24 in. B&B	1.50
2- 3 ft. B&B	2.00



PYRACANTHA FORMOSANA. The showiest of this family. Large, bright red berries in clusters. On older plants berries almost cover entire plant. About the same spread as height.

18-24 in. B&B	1.50
2- 3 ft. B&B	2.50
3- 4 ft. B&B	4.00
4- 5 ft. B&B	6.00

PYRACANTHA LALANDI (Laland Firethorn). Winter berried plants rapid in growth with many orange yellow berries. Rather upright in habit.

2-3 ft. B&B	1.50
3-4 ft. B&B	2.50
4-5 ft. B&B	4.00
5-6 ft. B&B	5.50



SEVERINIA BUXIFOLIA. Evergreen shrub with small boxwood like leaves and thorns. White sweet scented flowers followed by black berries.

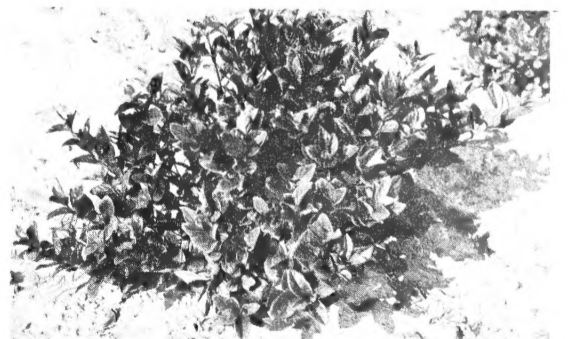
18-24 in. B&B	2.00
2- 3 ft. B&B	2.50
3- 4 ft. B&B	3.50

VIBURNUM MACROPHYLLUM. Big-leaf Viburnum. An upright grower with shiny foliage and white flowers.



VIBURNUM ODORATISSIMUM. Vigorous growth with large medium green rather thick leaves. White fragrant flowers. Prices above two varieties.

12-18 in. B&B	1.00
18-24 in. B&B	1.50
2- 3 ft. B&B	2.00



VIBURNUM SUSPENSUM. A low spreading grower with somewhat leathery leaf that is very attractive. A profusion of white flowers in late winter.

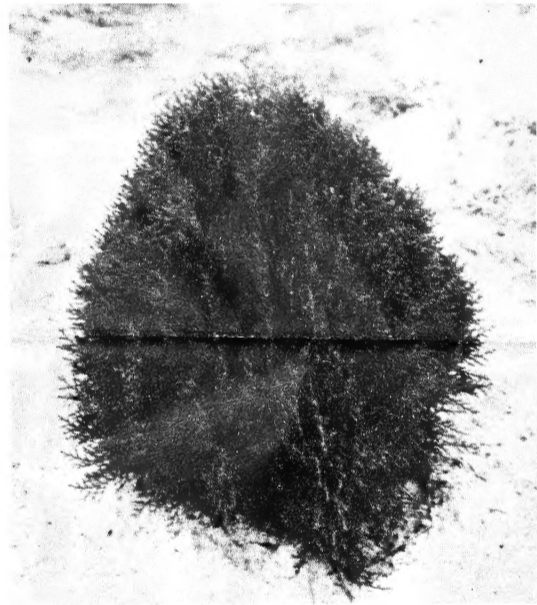
12-18 in. B&B	1.25
18-24 in. B&B	2.00
2- 3 ft. B&B	2.75

CONIFEROUS EVERGREENS



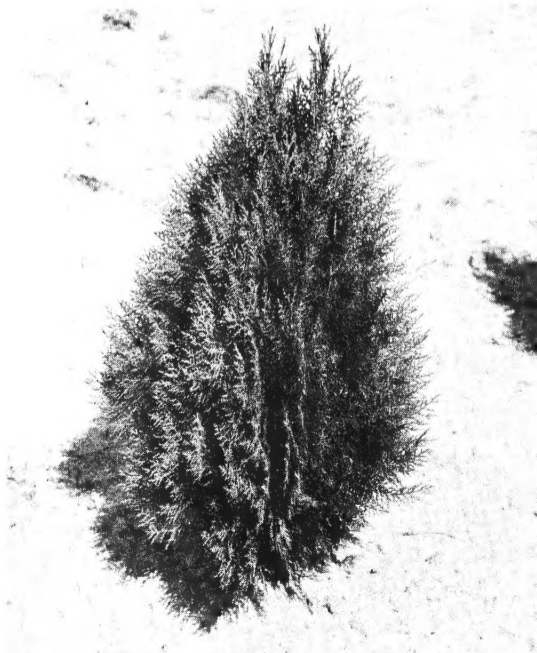
BIOTA AUREA NANA (Dwarf Golden Arbor Vitae). The well-known dwarf golden Arbor Vitae. Compact and well shaped. Holds up well under heat.

8-12 in. B&B.....	1.00
12-18 in. B&B.....	1.50
18-24 in. B&B.....	2.25
24-30 in. B&B.....	3.00



BIOTA BONITA (Dwarf Globe Arbor Vitae). This is a beautiful rich green variety, dwarf and of slow growth. It is cone-shaped and rather broad.

8-12 in. B&B.....	1.00
12-18 in. B&B.....	1.50
18-24 in. B&B.....	2.25



BIOTA EXCELLSA. Pyramidal Arborvitae cone-shaped, bright green. A little broader at base than B. Pyramidalis.

18-24 in. B&B.....	1.25
2- 3 ft. B&B.....	2.00
3- 4 ft. B&B.....	2.75



BIOTA -PYRAMIDALIS. Well-known pyramidal Arborvitae. Fairly slender in habit and a good grower.

18-24 in. B&B.....	1.25
2- 3 ft. B&B.....	2.00
3- 4 ft. B&B.....	2.75

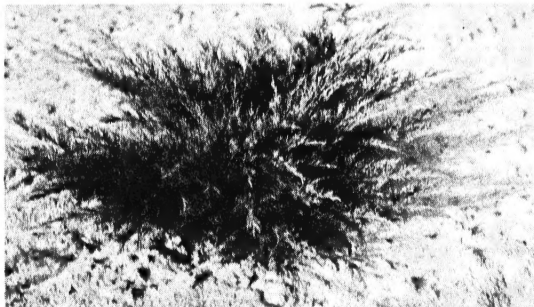
JUNIPERUS COMMUNIS (English Juniper). Rather pyramidal growth. Gray-green pointed leaves, rather sharp. Relatively fast grower.

2-3 ft. B&B.....	2.00
3-4 ft. B&B.....	3.00



JUNIPERUS EXCELLSA STRICTA (Greek Juniper). Slow growing blue-green juniper. Rather irregular in shape.

12-18 in. B&B.....	1.25
18-24 in. B&B.....	1.75



JUNIPERUS PFITZERIANA (Pfitzers Juniper). Forms a low, wide spreading head of bluish-green foliage. Very interesting and beautiful.

12-18 in. spread B&B.....	1.50
18-24 in. spread B&B.....	2.00
24-30 in. spread B&B.....	2.75

JUNIPERUS SYLVESTRIS (Japanese Juniper). One of the best conifers for the lower South. Needle-shaped leaves, bright to dark green. Upright growth and shears readily.

18-24 in. B&B.....	1.50
2- 3 ft. B&B.....	2.50

JUNIPERUS VIRGINIANA (Red Cedar). Native cedar tree with dark, green foliage. Compact growth.

18-24 in. B&B.....	1.50
2- 3 ft. B&B.....	2.50



PODOCARPOS MACROPHYLLA MAKI (Yew Tree). A handsome evergreen with rather dark, green foliage. Naturally makes a vase-shaped growth. Quite hardy.

PODOCARPOS CHINENSIS (Chinese Yew). A beautiful upright evergreen tree that may reach a height of 40 feet if left to grow naturally. The leaves, to 4 inches long, are narrow, glossy dark green and paler beneath. Prices above two varieties.

18-24 in. B&B.....	1.50
2- 3 ft. B&B.....	2.00
3- 4 ft. B&B.....	3.50
4- 5 ft. B&B.....	5.00



RETINOSPORA ERICOIDES (Cedar Cypress). This is a beautiful conifer, dense and compact in growth. Naturally it is an upright grower and may be pruned in very narrow columnar shape. The foliage is a light bright green.

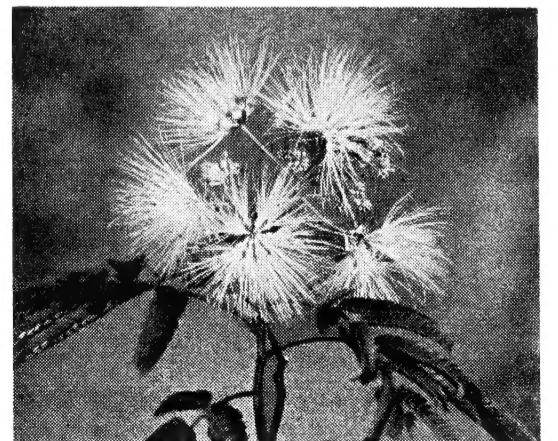
18-24 in. B&B.....	1.00
2- 3 ft. B&B.....	1.50
3- 4 ft. B&B.....	2.25

RETINOSPORA VEITCHI (Moss Cypress). Silvery blue foliage. A handsome form that grows rapidly and shears well. Erect in growth.

18-24 in. B&B.....	1.25
2- 3 ft. B&B.....	2.00

MISCELLANEOUS TREES AND SHRUBS

MIMOSA FLOWERS



ALBIZZIA JULIBRISSIN (Mimosa). A small, hardy, deciduous tree with low, spreading, flat-topped head and finely divided, dark green leaves. It blooms in the summer, bearing large clusters of pink flowers.

2-3 ft. Bare Roots.....	1.00
3-4 ft. Bare Roots.....	1.50
4-5 ft. Bare Roots.....	2.00
5-6 ft. Bare Roots.....	3.00



CERCIS CANADENSIS (Redbud). The American Redbud or Judas Tree is a small, nicely shaped, deciduous tree with rounded leaves and produces an abundance of rosey pink flowers in early spring. As the flowers appear before the foliage a Redbud in full flower is a lovely picture.

2-3 ft. Bare Roots.....	.75
3-4 ft. Bare Roots.....	1.00
4-5 ft. Bare Roots.....	1.50
5-6 ft. Bare Roots.....	2.50



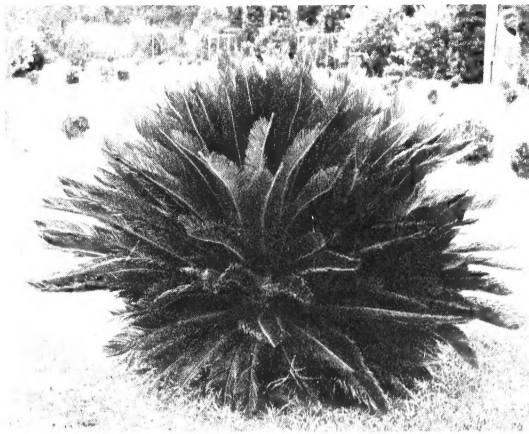
CORNUS FLORIDA (Dogwood). Small tree or large shrub with a spreading top. Pure white flowers come early in the spring followed by scarlet fruits. Well-known and well loved.

2-3 ft. Bare Roots.....	1.00
3-4 ft. Bare Roots.....	2.00
4-5 ft. Bare Roots.....	3.00
5-6 ft. Bare Roots.....	4.00
6-8 ft. Bare Roots.....	6.00



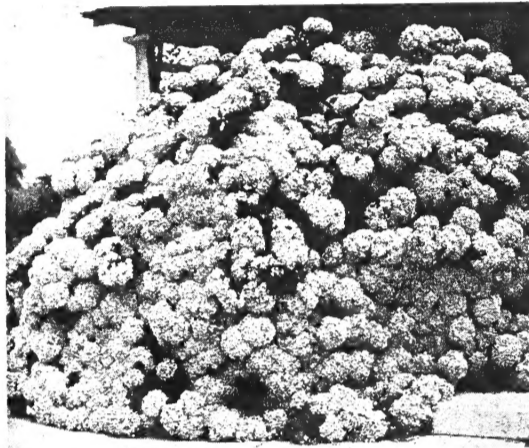
COCOS AUSTRALIS PALM. One of the hardest of palms, with graceful blue-green foliage, producing a very fine effect. Since the plant is dwarf in growth, it is especially good for parkways and other formal plantings as well as for pots and urns.

18-24 in. B&B.....	1.50
2- 3 ft. B&B.....	2.25



CYCAS REVOLUTA (Sago Palm). Dense symmetrical crown of dark green leaves. Excellent for formal use and adapted to house culture in sunny places, if given good drainage.

18-24 in. B&B.....	2.00
2- 3 ft. B&B.....	4.00



HYDRANGEA HORTENSIS (French Hydrangea). Long a favorite of Florida gardens, with its large, bold foliage and heads of blue flowers that are immense.

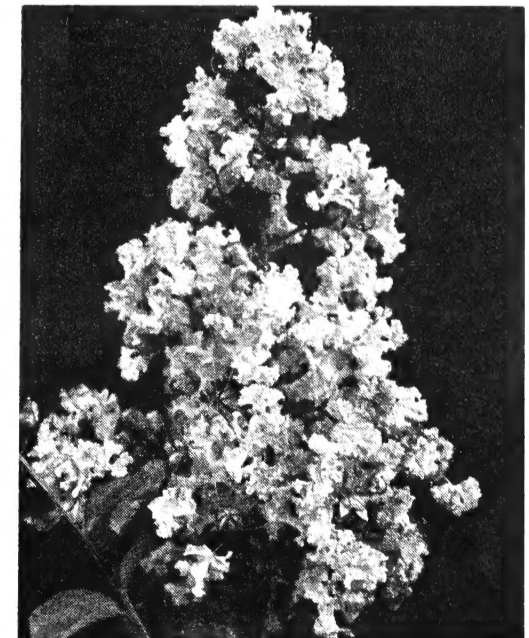
18-24 in. Bare Roots.....	1.00
2- 3 ft. Bare Roots.....	1.50



CYDONIA JAPONICA (Flowering Quince).

The earliest deciduous shrub to flower. Its leafless branches displaying the brilliant rosy red flowers in January, and if cut before that time and placed in water in house will even open up in December.

18-24 in. Bare Roots.....	1.00
2- 3 ft. Bare Roots.....	1.50

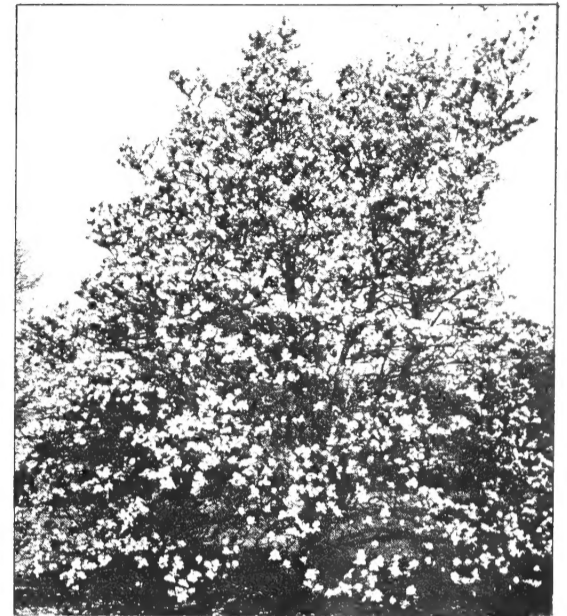


LAGERSTROEMIA INDICA (Crepe Myrtle).

Among the most important shrubs of the South, and as valuable here as the lilac in the North. A vigorous, well-grown plant that will attain a height of 15 to 20 feet, and be an immense bouquet of flowers in the summer and fall. Attracts much attention especially from visitors of the North.

Very hardy. Watermelon Red Only.

2-3 ft. Bare Roots.....	.75
3-4 ft. Bare Roots.....	1.00
4-5 ft. Bare Roots.....	1.50
5-6 ft. Bare Roots.....	2.00



M. SOULANGEANA NIGRA (Chinese Magnolia). Large flowers that are dark purple outside and pale inside. Buds form in the winter months and bloom in late winter. Makes a quick growth and forms a large shrub anywhere. Very showy.

18-24 in. B&B.....	2.00
2- 3 ft. B&B.....	2.50
3- 4 ft. B&B.....	4.00
4- 5 ft. B&B.....	5.00

PUNICA GRANATUM (Flowering Pomegranate). The ornamental Pomegranates are fast-growing shrubs with big, showy flowers 2 to 3 inches across and borne in great profusion in early summer.

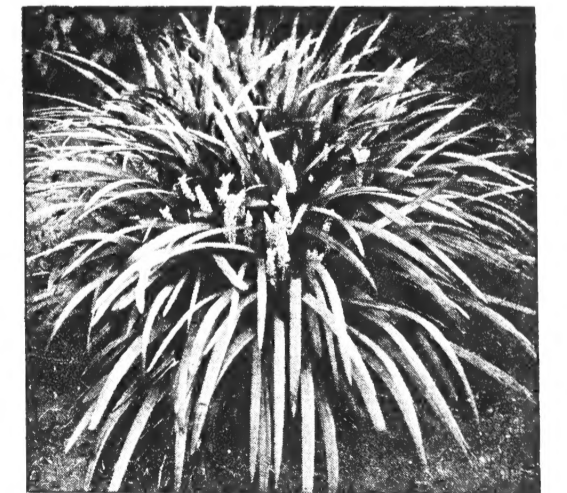
2-3 ft. Bare Roots.....	.75
3-4 ft. Bare Roots.....	1.00

SPIREA VANHOUTTII. A charming shrub of moderate size which almost everybody knows and wants in their garden. The arching wreath-like branches are loaded with white flowers in the spring.

2-3 ft. Bare Roots.....	.75
3-4 ft. Bare Roots.....	1.00
4-5 ft. Bare Roots.....	1.25

WEIGELIA ROSEA. An attractive, vigorous-growing shrub with rose-colored flowers.

2-3 ft. Bare Roots.....	.75
3-4 ft. Bare Roots.....	1.00



LIRIOPE GRAMINIFOLIA. A low-growing broad-leaved grass with spikes of lavender flowers. Excellent in borders or shady places.

Medium Clumps—4x4 in.....	.35
Large Clumps—6x6 in.....	.50

CINNAMOMUM CAMPHORA (Camphor). The well-known evergreen shade tree of the South. Fast in growth.

2-3 ft. B&B.....	2.00
3-4 ft. B&B.....	3.00
4-5 ft. B&B.....	4.50

AZALEAS

INDIAN AZALEAS, GROUP 1

BRILLIANT. Early to midseason. Compact, bushy plants with small leaves. Free bloomer, bearing flowers of a deep rose-pink.

CLEAR PINK. Late. A hardy, compact, free-flowering bush with fine foliage.

DUC de ROHAN. Medium-sized, salmon-pink.

GEORGE FRANC. A compact grower with very large pink flowers, shading to red in the center. This variety blooms early and has as much or more spread than height.

GLORY OF SUNNINGHILL. Another compact growing variety with medium-sized, rather deep salmon flowers. Foliage is good and plant is vigorous.

INDICA ALBA. Blooms later than Fielder's White. Pure white and very hardy.

IVERYANA. Almost pure white, but most flowers have a fine penciling of rose-pink which is visible at close range, but from 10 feet or more the blooms seem all white. Rather low and spreading in growth. Blooms in February and March.

LATE SALMON. Rather deep salmon, medium-size flowers. Blooms rather late in the season.

MME. FRY. Light, clear pink flowers and small shiny leaves make this an attractive plant at any season. Rather late to bloom and the plants are compact. When in flower a mass of color is all you can see.

NEW WHITE. Early pure white. Bushy in growth.

PINK MACRANTHA. One of the most compact growers there is. Has a clear pink flower and blooms very late in the season, with a few flowers coming on the plants till June. An extremely hardy variety, never injured by cold.

PRIDE OF DORKING. Rose-red, large flower, late bloomer.

PRIDE OF MOBILE. Large- bright-pink flowers. Blooms in great profusion.

PRIDE OF TALLAHASSEE. Deep pink blooms and very free flowering. Medium height. Mid-season bloom. A strikingly beautiful plant.

PRINCE OF ORANGE. Rather spreading variety with deep orange-red flowers.

VERVAINE. Late. Rather compact. Flowers. White and pink variegated.

PRICES OF GROUP 2

8-12 in. B&B	\$.50
12-15 in. B&B75
15-18 in. B&B	1.00
18-24 in. B&B	1.50
24-30 in. B&B	2.00
30-36 in. B&B	3.00
3- 4 ft. B&B	5.00
4- 5 ft. B&B	8.00

INDIAN AZALEAS, GROUP 2

CONCINNA. Midseason. Strong, open growing variety. Rosy lavender-lilac flower.

CREMENIA. Tall growth. Deep pink flowers, late bloom.

ELEGANS. The fastest grower of any pink variety. A beautiful clear pink flower coming into bloom fairly early in the season. The bush makes a rank growth, spreads out well and is the top variety among the pink types.

FORMOSA. The giant among azaleas. Lavender flowers of very large size. The largest leaves of any azalea, deep green. Compact and heavy bush which will outgrow any other Evergreen Azalea. Formosa is hardy, stands up and grows well, even under adverse conditions. A beautiful all-year evergreen as well as a persistent flowering one.

LEDIFOLIA ALBA. The hardiest of the white Indian Azaleas. Leaves hairy. Flower petals separated at the ends giving the flowers the appearance of a star. Hardy to Washington.

OMURASAKI. Flowers almost identical with Formosa, plant somewhat lower and wide spreading, with slightly narrower leaves usually arranged in rosette form.

PRESIDENT CLAY. An early and free bloomer having bright, brick-red flowers in profusion. This is the most vigorous-growing variety in the red sorts and one of the hardiest. It is in the same class as Elegans and Formosa as to vigor of growth.

RED MACRANTHA. A very hardy deep orange-red variety. Rather tall growth with small glossy leaves.

VITTATA FORTUNEI PURPUREA. A tall, very early blooming variety. Flowers rather light lavender with white variegations. This variety starts blooming in November and continues for some three months. A fine background plant for lower-growing varieties.

PRICES OF GROUP 1

6- 8 in. B&B	Each \$.50
8-12 in. B&B75
12-15 in. B&B	1.00
15-18 in. B&B	1.50
18-24 in. B&B	2.00
24-30 in. B&B	2.50
30-36 in. B&B	3.50
3- 4 ft. B&B	6.00



KURUME AZALEAS

CHRISTMAS CHEER. Christmas red, compact and hardy.

HEXIE. Hose in hose, deep red flowers. Low dense growth.

HINODEGIRI. All you see is a brilliant mass of scarlet flowers when this hardy compact Azalea is in bloom. Ashapely, dwarf plant ideal for a low hedge or facing down taller shrubbery.

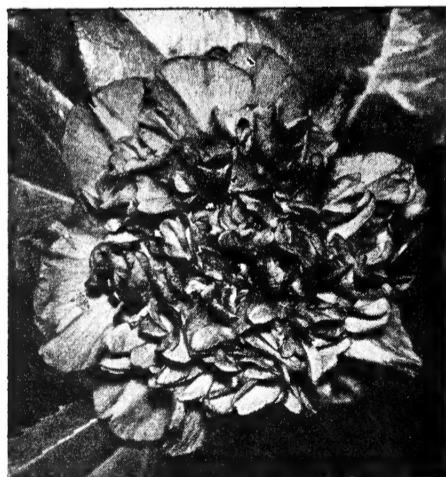
CORAL BELLS. Large clusters of light, salmon-pink, hose-in-hose flowers. Very free blooming and a bushy plant.

SNOW. Pure snow-white flowers on a plant with glossy bright green leaves. The best draw white.

PRICES OF KURUME AZALEAS

6- 8 in. B&B	\$.75
8-12 in. B&B	1.25
12-15 in. B&B	1.75
15-18 in. B&B	2.50
18-24 in. B&B	3.00

CAMELLIAS



ARAJISHI

CAMELLIAS ON OWN ROOT GROUP 1

ADOLPHE AUDUSSON. Semi-double, deep red. Very large flower with yellow stamens in center of compact mass. 18-24 in. to 24-30 in.

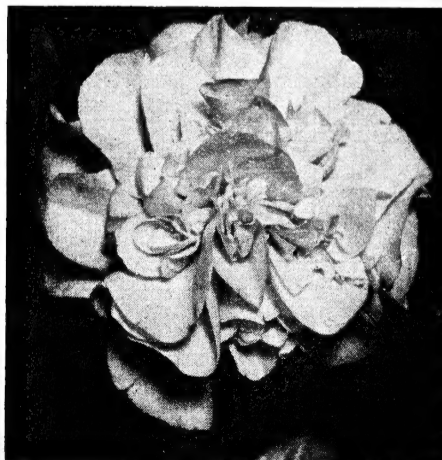
ALBA PLENA. Large imbricated white. Early bloomer. Very fine white. 8-12 in. to 18-24 in.

ANNA BRUNNEAU. Very large double salmon pink. Does best in shade. 8-12 in. to 24-30 in.

DANTE. Pure white, full double and symmetrical. 12-18 in. to 18-24 in.

EMPRESS. Immense semi-double. Pink with compact yellow stamens in center. Fine. 8-12 in. to 24-30 in.

LADY JANE GREY. Semi-double. Large red and white flower. Excellent. 12-18 in. to 18-24 in.



DEBUTANTE

MATHOTIANA RUBRA. Very large double red. Free blooming. One of the best. 12-18 in. to 4-5 ft.

MIKENJAKU. Very large semi-double. Red and white blooms. Very beautiful. 8-12 in. to 24-30 in.

ROSEA SUPERBA. Deep pink sport of Mathotiana Rubra. Very large double flower, red. 8-12 in. to 18-24 in.

WM. S. HASTIE. Full double, dahlia flowered dark red. 12-18 in. to 18-24 in.

PRICES ON OWN ROOT, GROUP 1

8-12 in.	\$2.00
12-18 in.	2.50
18-24 in.	3.50
24-30 in.	4.50
30-36 in.	6.50

CAMELLIAS ON OWN ROOT GROUP 2

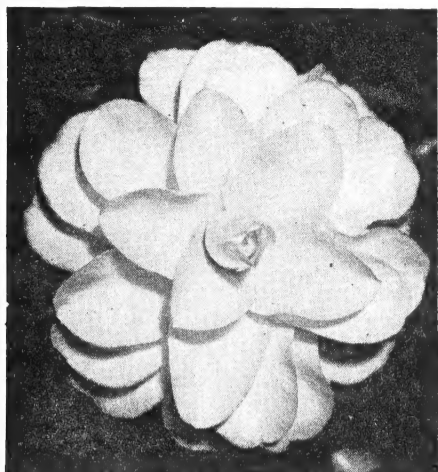
AKEBONO. Semi-double. Clear pink. Slightly fragrant. 12-18 in. to 30-36 in.

AUGUSTE DEL FOSSE. Late, bright red bloom, similar to Prof. Sargent. 12-18 in. to 24-30 in.

BEAUTY OF HOLLAND. A Herme sport, deep pink with white spots. 12-18 in. to 3-4 ft.

CARNATION. Carnation red flower and shape. Midseason bloom. Medium size. 12-18 in. to 30-36 in.

CELESTINE. Large, double, rose pink flower. 12-18 in. to 18-24 in.



PURITY

CHANDLERI. ELEGANS. Very large semi-double. Deep pink and white. Some blooms have many small petals in center. 8-12 in. to 24-30 in.

CHEERFUL. Very double, bright cherry red with high pointed center. 8-12 in. to 3-4 ft.

CLIVIANA. Semi-double. Light pink flower of large size. 12-18 in. to 3-4 ft.

COMPTE de GOMER. Double. Variegated white and delicate pink with irregular pencillings of old rose. 12-18 in. to 3-4 ft.

CUP OF BEAUTY. Semi-double. Deep pink. Resembles cup and saucer when partly open. 12-18 in. to 30-36 in.

DEBUTANTE. Peony-form. Delicate pink, early bloomer. 12-18 in. to 30-36 in.

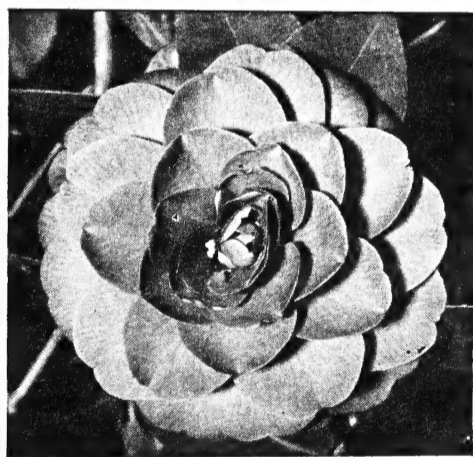
DERBYANA. Semi-double, to peony-form. Pink to deep red. 8-12 in. to 3-4 ft.

GLORY de NANTES. Large semi-double, very deep rose, long yellow stamens. 12-18 in. to 30-36 in.

HERME. Large double. Light rose pink bordered with white. 8-12 in. to 3-4 ft.

HINOMARU. Formal deep red flower. Glossy deep green foliage. 12-18 in. only.

IMPERATOR. Handsome, red, peony-type flower. Golden stamens showing. 18-24 in. to 3-4 ft.



GLEN 40

LADY VAN SITTART. Semi-double, pink to red, depending on temperature. Recurved petals. 12-18 in. to 30-36 in.

LILA BRANCH. Medium size double salmon pink. Quite profuse in bloom. 12-18 in. to 24-30 in.

LOUISE MACLAY. Vigorous growing plant. Large semi-double clear pink flower. Fine variety. 12-18 in. to 24-30 in.

LURIES FAVORITE. Soft lavender-pink with darker veins. Petals crinkled. Semi-double. 12-18 in. to 24-30 in.

MATHOTIANA ALBA. Large, pure white with faint pink line. Full double. Imbricated. 12-18 in. to 24-30 in.

MAURICE HURST. Pink to salmon, large irregular semi-double. A strong grower. 12-18 in. to 24-30 in.

MEIGS VARIEGATED. Large, light rose pink, sometimes splotched white. Full double. 8-12 in. to 24-30 in.

MILLE BEAU. Peony-form flowers of various shades from almost white to red. No two flowers exactly alike. 8-12 in. to 3-4 ft.

MONARCH. Peony-type of deep pink often spotted with white. Blooms often measure six inches. 12-18 in. to 30-36 in.

MONJISU. Semi-double. Red and white flowers. Somewhat recurved petals. 8-12 in. to 24-30 in.

NOBLISSIMA. Double peony-form, solid white flower. Golden stamens between the petals. 8-12 in. to 24-30 in.

PANACHE. Large, double variegated. Clear white to clear deep pink. All blossoms different. 12-18 in. to 30-36 in.

PERFECTION ALBA. Full double. Pure white medium size. 12-18 in. to 24-30 in.

PINK HERME. Peony-form. Pink with stamens visible. 12-18 in. to 30-36 in.

PINK PERFECTION. Shell pink and, as its name implies, this camellia is really perfection. 12-18 in. to 3-4 ft.

PROFESSOR SARGENT. Peony-form, almost round flowers. Crimson. Very hardy. 12-18 in. to 24-30 in.

PURITY. Pure white, double. Long season of bloom and cold resistant. 12-18 in. to 30-36 in.

TRI-COLOR. Variegated pink, red and white. Large flower and very hardy variety. 30-36 in. to 3-4 ft.

VICTOR EMMANUEL. Loose peony-type. Very large. Deep velvety red. 8-12 in. to 3-4 ft.

PRICES ON OWN ROOT, GROUP 2

8-12 in.	\$1.50
12-18 in.	2.00
18-24 in.	2.75
24-30 in.	3.75
30-36 in.	5.00
3-4 ft.	9.00

CAMELLIAS ON OWN ROOT GROUP 3

HALLIFOLIA. Clear light red, semi-double. Golden anthered stamens in center. Very hardy. 8-12 in. to 6-7 ft.

HENRI FAVRE. Red penciled with white stripes lengthwise of the petals. Small variegation. 18-24 in. to 30-36 in.

LILYII. Double imbricated. White and pink. 8-12 in. to 4-5 ft.

MATOSE. Full double. Baby pink marbled with white. Early and profuse bloom. 8-12 in. to 24-30 in.

NO. 1 WHITE. Full double. White. Resembling in form and size the Pink Perfection. 12-18 in. to 4-5 ft.

PENROSE. Medium semi-double. Red. Stamens showing in center. Rapid grower. 12-18 in. to 30-36 in.

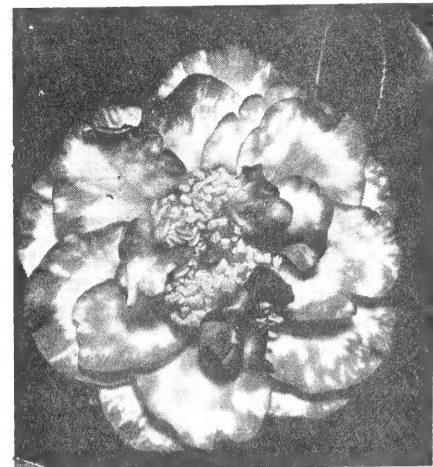
ROSITA. Very double. Rose-pink flower. Petals in symmetrical rosette form. Strong grower. 8-12 in. to 30-36 in.

SARAH FROST. Full double, rose-pink. Petals diminishing in size to the center. 8-12 in. to 24-30 in.

PRICES ON OWN ROOT, GROUP 3

8-12 in.	\$1.25	3-4 ft.	\$ 8.00
12-18 in.	1.75	4-5 ft.	10.00
18-24 in.	2.00	5-6 ft.	12.50
24-30 in.	2.75	6-7 ft.	15.00
30-36 in.	4.00		

GRAFTED CAMELLIA PLANTS



LADY JANE GREY

Camellias are grafted in order to produce large bushy plants of fine varieties in a relatively short time. A fine Camellia variety grafted on an 8 to 10 years old Camellia understock will make a large sturdy plant in 3 to 4 years, while the same variety grown on its own roots from a cutting would take 12 to 15 years to make the same size plant.

The value of the understock used, the labor and time necessary to carry out the grafting process, and the losses incurred in grafting are reasons why grafted plants must be relatively higher in price than own root plants. We cannot recommend grafted plants too highly, because they are more vigorous in growth and give you such quick results.



KUMASAKA

GRAFTED CAMELLIAS, RARE VARIETIES

GROUP 1

ADOLPHE AUDUSSON VARIEGATED. Large semi-double. Deep red, creamy white variegation. 12-18 in. to 24-30 in.

ALLEEN. Predominately white sport of Donckelari. Bright red edges and spots. 8-12 in. to 30-36 in.

FIMBRIATA SUPERBA. Semi-double. Deep flame red, wavy serrated petals. 12-18 in. to 30-36 in.

LINDSAY NEILL. Semi-double, loose peony type. Very dark red with white variegation. 12-18 in. to 30-36 in.

MAGNOLIAFLORA. Large semi-double. Recurved petals, light flesh-pink. 12-18 in. to 30-36 in.

MOONLIGHT. White with pink overcast. Large semi-double. Vigorous grower. 8-12 in. to 30-36 in.

VILLE de NANTES. Very fine large semi-double. Red white variegation, has "rabbit ear" petals in center standing up from flower. 8-12 in. to 30-36 in.

WHITE QUEEN. Very large semi-double. White. 12-18 in. to 24-30 in.

PRICES RARE VARIETIES, GROUP 1

8-12 in.	\$ 7.50
12-18 in.	10.00
18-24 in.	13.50
24-30 in.	17.50
30-36 in.	22.50

**GRAFTED CAMELLIAS
FINE VARIETIES
GROUP 2**

ADOLPHE AUDUSSON. Deep red, semi-double. Very large. Compact growth. Very fine. 8-12 in. to 18-24 in.

ALBA FIMBRIATA. Imbricated white with petals serrated. Similar to Alba Plena. 8-12 in. to 3-4 ft.

ANNA BRUNNEAU. Very large double salmon pink. Does best in shade. 8-12 in. to 3-4 ft.

ASPACIA (Variegated Emperor of Russia). Semi-double, red with white blotches. 8-12 in. to 30-36 in.

AUNT JETTY. Red semi-double. Flowers large, heavy bloomer. 12-18 in. to 3-4 ft.

BUSCH GARDEN RED. Very large double red. 12-18 in. to 30-36 in.

CARDINAL RICHELIEU. Free flowering peony-form red. 12-18 in. to 30-36 in.

CATHERINE CATHCART. Large, imbricated, soft pink with white spots. 8-12 in. to 18-24 in.

C. M. HOVEY (Mathotiana Rubra Variant). Deep red, white variegated. Very large. 8-12 in. to 30-36 in.

DIAKAGURA. Very early bloom, shell pink splashed white. 8-12 in. to 24-30 in.

DONCKELARI. Large semi-double. Red, white blotches. Good. 8-12 in. to 24-30 in.

DUNCAN BELL. Large peony-type orange red. 12-18 in. to 24-30 in.

ELEANOR HAGOOD. Medium size rose form flowers of delicate pink. 12-18 in. to 18-24 in.

FIREBRAND. Fine semi-double. Scarlet red. 8-12 in. to 24-30 in.

GIGANTEA. Immense semi-double. Red with white markings. Sometimes mostly white. 12-18 in. to 30-36 in.

GLEN 40. Large imbricated double red, sometimes white spots. 8-12 in. to 18-24 in.

IMURA. Very fine white semi-double flower. Large with recurved petals. 18-24 in. to 5-6 ft.

KUMASAKA. Deep pink loose peony type. Form similar to Herme. 8-12 in. to 30-36 in.

LADY JANE GREY. Semi-double. Large red and white flower. Excellent. 8-12 in. to 30-36 in.

MARION MITCHELL. Large semi-double scarlet red. Blooms rather late in season. 12-18 in. to 18-24 in.

MARTHA BRICE. Large semi-double. Light pink, occasional white variegations. 8-12 in. to 30-36 in.

MATHOTIANA RUBRA. Very large double red. Free blooming. One of the best. 12-18 in. to 4-5 ft.

MIKENJAKU. Very large semi-double. Red and white blooms. Very beautiful. 12-18 in. to 3-4 ft.

PRISCILLA BROOKS. Large semi-double to peony-form. White with pink stripe. 8-12 in. to 24-30 in.

QUEEN BESSIE. Semi-double. Large clear white wavy petals. Yellow stamens. 8-12 in. to 30-36 in.

REV. JOHN BENNETT. Large semi-double. Salmon pink with pale lighter markings radiating from throat of flower. 8-12 in. to 30-36 in.

REV. JOHN G. DRAYTON. Loose peony form. Deep pink with wavy petals. 18-24 in. to 30-36 in.

ROSEA SUPERBA. Deep pink sport of Mathotiana Rubra. Very large double flower. 8-12 in. to 30-36 in.

SENATOR DUNCAN U. FLETCHER. Large peony type red flower. Excellent. 12-18 in. to 3-4 ft.

SNOWDRIFT. Snowy white. Semi-double. Water-lily type. 8-12 in. to 18-24 inches.

VARIEGATED EMPRESS. Immense semi-double. Pink with white blotches. 12-18 in. to 24-30 in.

VICTOR IMMANUEL. Loose peony type. Very large. Deep velvety red. Fine. 8-12 in. to 3-4 feet.

WM. S. HASTIE. Full double. Dahlia flowered, dark red. 8-12 in. to 4-5 ft.

PRICES FINE VARIETIES, GROUP 2

8-12 in.	\$ 4.00
12-18 in.	5.00
18-24 in.	7.50
24-30 in.	10.00
30-36 in.	12.50
3- 4 ft.	15.00
4- 5 ft.	20.00

**GRAFTED CAMELLIAS
STANDARD VARIETIES
GROUP 3**

ARAJISHI. Carnation type flower. Dark red. Dark glossy foliage. 12-18 in. to 18-24 in.

AKEBONO. Semi-double. Clear pink. Slightly fragrant. 12-18 in. to 3-4 ft.

ALBA PLENA. Large imbricated white. Early bloomer. Very fine white. 8-12 in. to 24-30 in.

ALBA SUPERBA. Large semi-double. White, later than Alba Plena. 8-12 in. to 5-6 ft.

BEAUTY OF HOLLAND. A Herme sport. Deep pink with white spots. 24-30 in. to 4-5 ft.

CELESTINE. Large, double rose pink. 24-30 in. to 3-4 ft.

CHANDLERI ELEGANS. Very large semi-double. Deep pink and white. Some blooms have many small petals in center. 18-24 in. to 4-5 ft.

CLIVIANA. Semi-double, light, rather salmon pink, large. 12-18 in. to 30-36 in.

CUP OF BEAUTY (David Gerbing). Semi-double. Deep pink. Resembles cup and saucer when partly open. 18-24 in. to 4-5 ft.

DANTE. Pure white. Full double and symmetrical. 8-12 in. to 30-36 in.

DEBUTANTE. Peony form. Delicate pink. Early bloomer. 12-18 in. to 30-36 in.

DERBYANA. Semi-double to peonyform. Pink to deep red. 12-18 in. to 5-6 ft.

EMPRESS. Immense, semi-double. Pink with compact yellow stamens in center. Fine. 8-12 in. to 3-4 ft.

H. A. DOWNING. Large, semi-double, vermilion red. 12-18 in. to 3-4 ft.

HARLEQUIN. Ball shaped flower somewhat like Prof. Sargent except mostly white. A few pink stripes or spots. 18-24 in. to 3-4 ft.

HINOMARU. Formal deep red flower. Glossy deep green foliage. 18-24 in. to 5-6 ft.

HONOR d'AMERIQUE. Peonyform deep pink to red, often spotted white. Very large flower of this type and very handsome. 18-24 in. to 3-4 ft.

HERME. Large double, light rose pink, bordered with white. 24-30 in. to 4-5 ft.

GLORY de NANTES. Large semi-double to peony type flower. Rose red. 24-30 in. to 5-6 ft.

IMPERATOR. Large double, red. Stamens and petals intermixed. 24-30 in. to 4-5 ft.

LADY MARION. Double pink, deeper on outer edge of petals. Vigorous grower. 30-36 in. to 5-6 ft.

LADY SUMEREZ. Semi-double, ruby red. Yellow stamens. 30-36 in. to 4-5 ft.

LADY VAN SITTART. Semi-double, pink to red depending on temperature. Recurved petals. 24-30 in. to 5-6 ft.

LA PEPPERMINT. Double flowered. White and red stripe like peppermint candy. 8-12 in. to 24-30 in.

LILA BRANCH. Medium double. Salmon pink flower. 8-12 in. and 12-18 in.

LILYII. Double imbricated. White and pink. 30-36 in. to 4-5 ft.

LURIES FAVORITE. Crepe like petals, soft lavender pink, darker veins. Semi-double. 8-12 in. to 30-36 in.

MAURICE HURST (Enrico Bettoni). Clear, light pink. Semi-double to peonyform. Large. 30-36 in. to 5-6 ft.

MARTHA WRIGHT. Semi-double. Light pink. Very beautiful. 24-30 in. to 4-5 ft.

MILLE BEAU. Peonyform flowers of various shades from almost white to red. No two flowers exactly alike. 30-36 in. to 5-6 ft.

MONJISU. Semi-double. Red and white flowers. Somewhat recurved petals. 8-12 in. to 30-36 in.

PERFECTION ALBA. Full to double, pure white. Medium size. 12-18 in. to 5-6 ft.

PINK ELIZABETH. Very double pure pink blooms with petals crinkled at ends. 8-12 in. to 30-36 in.

PINK HERME. Peonyform. Pink with stamens visible. 24-30 in. to 5-6 ft.

PINK PERFECTION. A formal double shell pink. One of the best known and best liked varieties. 24-30 in. to 4-5 ft.

PIPE PIUS IX. Deep red full imbricated flowers. Large. 12-18 in. to 3-4 ft.

PROFESSOR SARGENT. Peonyform almost round flowers. Crimson, very hardy. 12-18 in. to 5-6 ft.

PURITY. Pure white double. Long season and cold resistant. 18-24 in. to 5-6 ft.

RAINY SUN. Large, deep pink semi-double. Leaves rather narrow and twisted. 12-18 in. to 30-36 in.

SWEETI-VERA. Large, semi-double. White with markings of delicate pink. 8-12 in. to 30-36 in.

TRI-COLOR. Semi-double. White flowers with red and pink variegation. A hardy variety, very resistant to cold injury. 30-36 in. to 5-6 ft.

VEDRINE. Large, loose deep peony type flower. 18-24 in. to 4-5 ft.

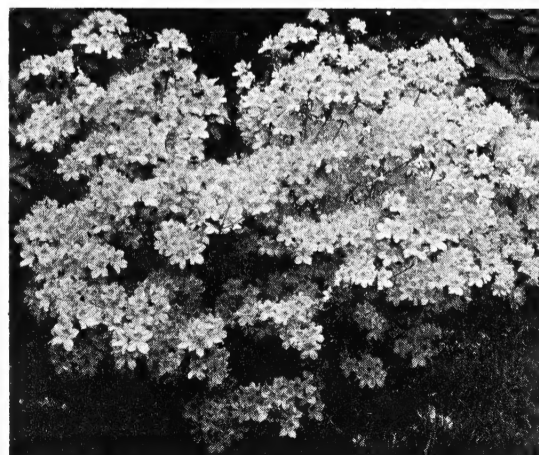
WILLIAM PENN. Peony like flowers. Deep purplish red with lighter red and white markings. 24-30 in. to 3-4 ft.

**PRICES STANDARD VARIETIES,
GROUP 3**

8-12 in.	\$3.50	30-36 in.	\$10.00
12-18 in.	4.50	3- 4 ft.	12.50
18-24 in.	6.00	4- 5 ft.	17.50
24-30 in.	8.00	5- 6 ft.	22.50

**Azalea and Camellia
Special Offers**

Here is your opportunity to get a good collection of Azaleas or Camellias at a bargain price. These are 2 year plants about 8 to 12 inch size, with a good heavy root system, and they come to you postpaid.



Azalea Special Offer No. 1

- 2 Light Pink Azaleas
- 2 Lavender Azaleas
- 2 White Azaleas
- 2 Deep Pink Azaleas
- 2 Red Azaleas
- 2 Medium Pink Azaleas

Above 12 Azaleas — \$5.00 Postpaid.

Azalea and Camellia

Offer No. 2

- 1 Lavender Azalea
- 1 Orange Red Azalea
- 1 Light Pink Azalea
- 1 Red Azalea
- 1 White Azalea
- 1 Shell Pink Double Camellia
- 1 Red Semi-Double Camellia
- 1 Double Variegated Camellia
- 1 Double White Camellia
- 1 Peony-type Variegated Camellia

Above 5 Azaleas & 5 Camellias—\$5.00 Postpaid

Camellia Special Offer No. 3

- 1 Semi-Double Red Camellia
- 1 Double Variegated Camellia
- 1 Double Medium Pink Camellia
- 1 Double Red White Stripes Camellia
- 1 Double White Camellia
- 1 Peony-type Variegated Camellia
- 1 Double Red Camellia
- 1 Peony-type White Camellia

Above 8 Camellias — \$5.00 Postpaid

Camellias in small and medium sizes can be handled and transplanted safely bare-rooted like a number of other broad-leaf evergreens. Since many people living at a distance from the nursery find the transportation cost on balled and burlapped Camellias is rather high, we have selected some excellent varieties, which we offer bare-root packed in Sphagnum moss and prepaid to you by parcel post.

We can furnish the following varieties, descriptions of which will be found in the regular Camellia section of this catalog.

Cheerful	Pink Perfection
Cup of Beauty	Panache
Derbiana	Sarah Frost
Hallifolia	Tri-color
Monarch	Victor Emmanuel

12-18 in. branched plants 1.50 each—6 for 8.50
18-24 in. branched plants 2.25 each—6 for 12.50

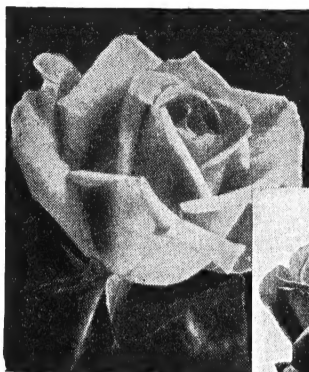
Azaleas are used in many plantings along with Camellias, as both give a wealth of winter and early spring bloom. We are offering well branched Azaleas, ready to bloom this year. These are also shipped bare-root, packed in moss, by Prepaid parcel post.

Elegans	Glory of Sunninghill
Formosa	Pink Macrantha
President Clay	Pride of Tallahassee
8-12 in. plants with buds .50 each—12 for 5.00	
12-18 in. plants with buds .75 each—12 for 8.00	

Minimum order on Azaleas — 1.50.

Azaleas and Camellias can be shipped on this offer from October 15th to April 1st.

ROSE BUSHES



PINK RADIANCE



RED RADIANCE

RED BUSH ROSES

ETOILE de HOLLANDE. We believe this is the finest red Rose grown. Flowers a glorious velvety, crimson, almost black in the bud. With plenty of fertilizer it is very vigorous and produces plenty of flowers.

LOUIS PHILLIPPE. Very dark red. Holds its foliage the year round and blooms every month in Florida.

RED RADIANCE. The No. 1 Rose for the South. No Rose equals this for strong growth under adverse conditions, or for the great quantity of blooms it produces all through the season, even in the hottest part of the summer.

PINK PUSH ROSES

MRS. CHARLES BELL. The illustrious shell-pink sport of Radiance. Good, strong bush bearing plenty of flowers. One of the best all-season bloomers.

PINK RADIANCE. The original Radiance. Rose-pink flowers of good size and form. The yardstick by which other Roses are judged.

EDITOR McFARLAND. A strong growing variety of upright habit. Flowers clear deep rose-pink. Good form.

WHITE BUSH ROSES

CALEDONIA. Without a doubt, one of the finest white roses grown. The long, snowy white buds are exquisite, and the blossoms possess a delightful fragrance. Takes many prizes at the flower shows.

FRAU KARL DRUSCHKI. Known as the "White American Beauty." Very vigorous bushes and the largest flower of any white rose grown. While this is a Hybrid Perpetual Rose, in the South it is nearly ever-blooming.

YELLOW BUSH ROSES

GOLDEN OPHELIA. Medium-size yellow blooms. One of the heaviest blooming varieties in the yellow roses.

LUXEMBOURG. A rich apricot-yellow, shaded copper. One of the strongest of the deep yellow varieties.

TWO-TONED ROSES

PRESIDENT HERBERT HOOVER. A wonderful multi-colored Rose combining many shades of cerise-pink, flame, scarlet and yellow. Long, beautifully formed buds that open slowly and possess a most delicious fragrance.

TALISMAN. A brilliant flower combining orange-scarlet and golden-yellow in irregular proportions. Very double, well shaped.

CLIMBING ROSES

PAUL'S SCARLET CLIMBER. The most popular climbing Rose in the Southeast. Brilliant scarlet flowers, borne in great profusion in early spring.

2 YEAR FIELD GROWN ROSES IN ABOVE VARIETIES

Each 75¢ ~~1.00~~ **OUT** ~~1.25~~ **OUT** ~~1.50~~ **OUT** ~~1.75~~ **OUT** ~~2.00~~ **OUT** ~~2.25~~ **OUT** ~~2.50~~ **OUT** ~~2.75~~ **OUT** ~~3.00~~ **OUT** ~~3.25~~ **OUT** ~~3.50~~ **OUT** ~~3.75~~ **OUT** ~~4.00~~ **OUT** ~~4.25~~ **OUT** ~~4.50~~ **OUT** ~~4.75~~ **OUT** ~~5.00~~ **OUT** ~~5.25~~ **OUT** ~~5.50~~ **OUT** ~~5.75~~ **OUT** ~~6.00~~ **OUT**

HOW TO PLANT BARE-ROOTED PLANTS AND TREES

Trees lose part of their root system in transplanting, and it is best to cut part of the top back to balance up. The hole for planting should be dug deep enough and wide enough to accommodate the roots without cramping them. Side roots should be spread out in a natural position and not packed downward. Any broken roots should be pruned off, and the ends of any roots that are bruised should also be pruned back slightly. You can see where the soil-line on the tree is and the trees should be set from $\frac{1}{2}$ to 1 inch lower than this soil-line. Use good top soil, finely pulverized, in filling in. Put in some soil, then work it around the roots, keeping the side roots out sideways and not packing them downward. Pack the soil firmly around the roots when you put it in. When the hole is filled to within 2 to 3 inches of the top, fill it with water and let it soak down. Do this two or three times until you are sure the soil is thoroughly saturated to the bottom of the hole. Then fill up the hole nearly to the ground level with loose soil and do not pack this.

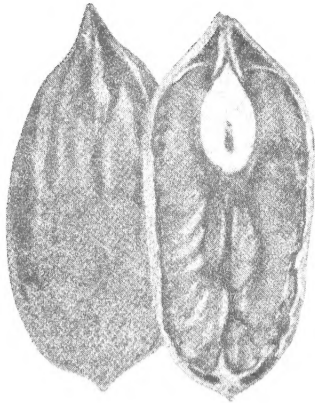
FERTILIZING

Almost any plant will do better if given a balanced fertilizer. Commercial fertilizer 5-7-5 formula is good on most garden shrubs, trees and fruit and nut trees. This should be applied about the middle of March, or after the plants have been set out. In this case plants set in March would be fertilized in May after the new roots have started to grow. The amount of fertilizer required varies with the size of the plant. A half pound per plant on the average 2 to 3 ft. plants would be about right. Keep the fertilizer out about 6 inches to a foot from the trunk of the tree or plant, scatter it on top of the soil and water it in.

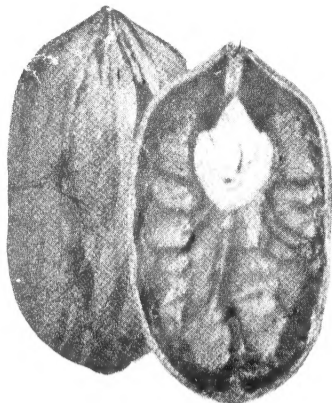
TERMS OF BUSINESS:

Except where otherwise stated, all prices listed are F. O. B. Monticello, Fla. Terms Cash with order, or 25% cash, balance C.O.D. Pecans larger than 2-3 ft. and fruit trees larger than 3-4 ft. must be shipped express as they are too large for Parcel Post. If your express office is different from your Post Office please note this on order. Unless otherwise specified trees will be shipped by express.

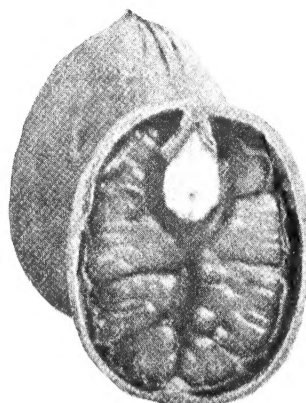
SELECT FRUIT AND NUT TREES



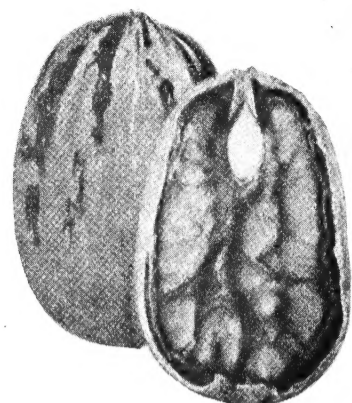
Schley



Stuart



Moneymaker



Success

PECAN TREES

MONEYMAKER. This is an early bearer, prolific, healthy, and remarkably free from nut diseases that attack some of the pecans. Size medium, rounded, oblong. A heavy bearer of splendid nuts.

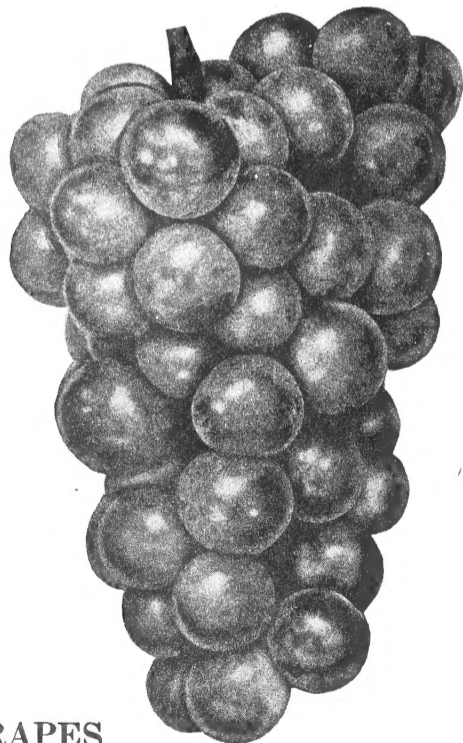
MOORE. A very consistent bearer, producing medium-sized nuts that are of the finest quality. Comparatively thin shell and plump kernel.

SCHLEY. One of the finest pecans. Very thin shell and meat that is of excellent flavor. Has few equals as a market nut.

STUART. This pecan thrives throughout the South and is a heavy bearer. It is extensively known. The nut has a shell of medium thickness and is of very good cracking quality.

SUCCESS. A good-growing, heavy-bearing tree. Nuts are oblong, with thin shell and full of good quality, juicy, sweet meat.

1-2 ft.	\$1.00
2-3 ft.	1.50
3-4 ft.	1.75
4-5 ft.	2.00
5-6 ft.	2.50
6-8 ft.	3.00



GRAPES

CONCORD. The most widely known and popular of all American Grapes. Produces profusely. Its medium-size bunches of blue-black grapes, which everyone agrees have the finest flavor of any eastern variety. For grape juice and jelly there is nothing to excel it.

NIAGARA. The standard American green grape, holding the same rank among the green kinds that Concord holds in the blacks. Berries large, pale yellow, tender, sweet and juicy.

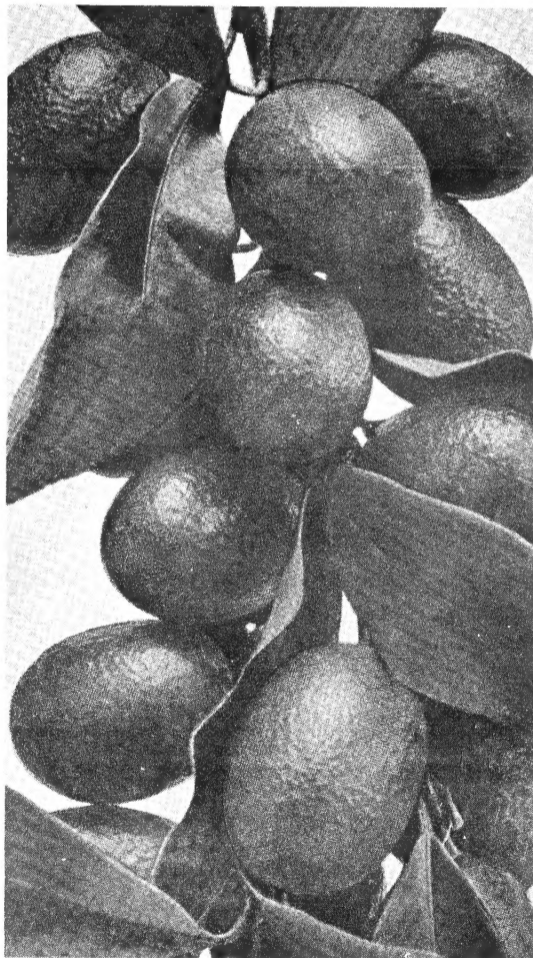
Above two varieties: Each
2 year50

MUSCADINE GRAPES

JAMES. Berries large, blue-black, in clusters of from 6 to 10. Skin thin, pulp tough, sweet and juicy, quality good. A showy fruit.

SCUPPERNONG. Berries large, seldom more than 8 to 10 in the cluster. Color brown, skin thick, flesh pulpy, flavor sweet and of a peculiar musky aroma. Vine is free from all diseases and insects. Prolific and a sure bearer.

Above two varieties: Each
2 year75



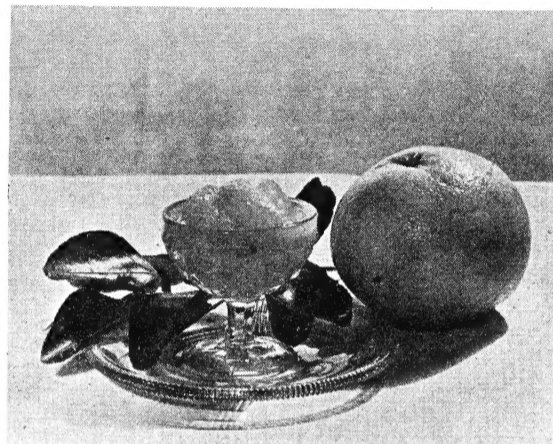
KUMQUATS

MARUMI. Small round, very ornamental fruit. Tree slow of growth, but compact and produces a profusion of fruit while still young.

NAGAMI. Vigorous, broadly upright, handsome. Fruit 1½ to 2 inches long, rind sweet, pulp and juice finely flavored. This tree forms a nice head.

12-18 in. \$1.00
18-24 in. 1.50
2-3 ft. 2.00

OLD OUT



GRAPEFRUIT

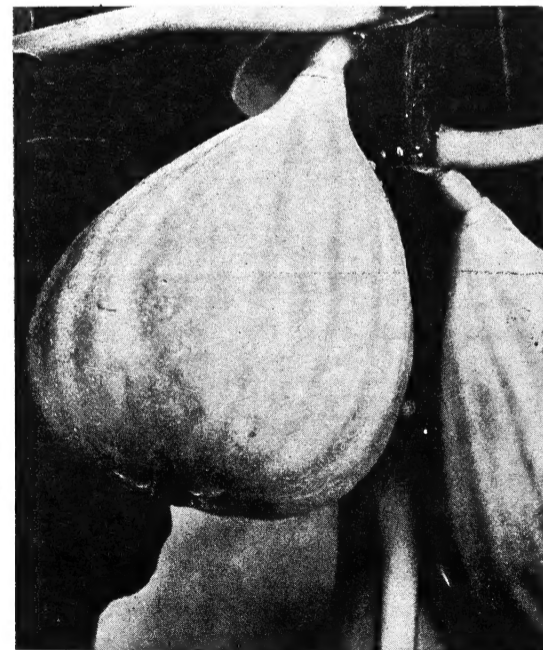
DUNCAN. One of the very best for all uses, lacking nothing required for the table or market. Of good quality, juicy. Hardest of all grapefruits.

18-24 in. Each
2-3 ft. \$1.00
1.50

PINEAPPLE ORANGE

One of the hardest of the round oranges. Grows in North Florida when budded on the hardy citrus trifoliata stock.

18-24 in. Each
2-3 ft. \$1.00
1.50

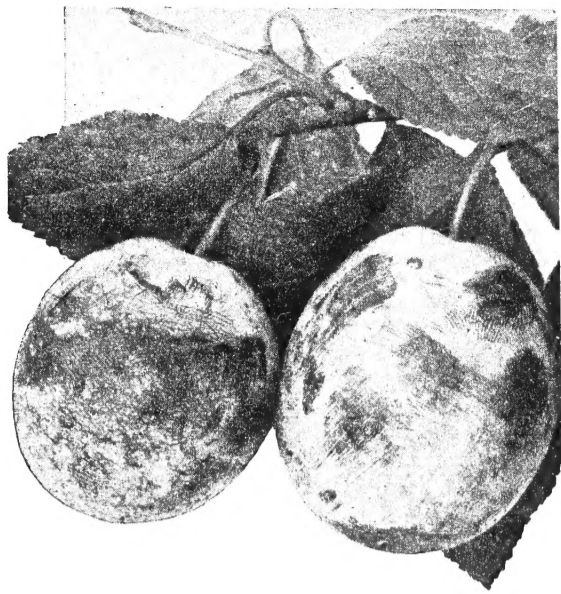


FIGS

CELESTE. Juicy and sweet. Very desirable fig for canning. Flesh a light rose at center. Early and hardy bearer.

MAGNOLIA. A large, excellent variety, well liked throughout the South.

Above two varieties: Each
12-18 in. \$.50
18-24 in.60
2-3 ft.75



APPLES

YELLOW HORSE. Most popular Southern summer apple.

RED DELICIOUS. Delicious, eating or cooking. Bears very young. Fine sauce. Summer favorite.

YELLOW DELICIOUS. Famous eating apple.

OCTOBER. Crisp, spicy and juicy. Early Red Wine-sap. June.

	Each
3-4 ft.	\$.75
4-5 ft.	1.00

PLUMS

ABUNDANCE. An early red plum with yellow flesh.

BURBANK. Dark red with yellow flesh, sweet flavor.

RED JUNE. The earliest sort.

Above three varieties:	Each
2-3 ft.	\$.75
3-4 ft.	1.00
4-5 ft.	1.25

BLACK WALNUT

Rich nuts with a flavor all their own.

	Each
18-24 in.	\$.50
2- 3 ft.75
3- 4 ft.	1.00



PEACHES

BELLE OF GEORGIA. White with red cheek. A prolific bearer, widely used. Free stone.

CARMAN. Large, creamy white, with blush juicy. Fine free-bearing variety.

ELBERTA. This variety has been for many years, and still is, one of the finest peaches. The name Elberta is almost as well known as the word Peach itself. Good-sized, oval, yellow fruit with red cheeks, juicy and well flavored, and bears consistently. Elberta is excellent for home and market.

J. H. HALE. Its exceptional appearance, quality and heavy bearing habit have made it a profitable commercial variety even during years of low prices. Has yellow skin with markings of dark red and carmine. Fine flavor and juicy.

JEWEL (Extra early). Sometimes called the Florida Peach. A small to medium fruit that will grow down to central Florida. Ripens in May. Sweet and juicy.

MAYFLOWER. The earliest of all. Medium-size creamy white fruits, mottled with dark red, semi-freestone. White, juicy flesh.

Above varieties:	Each
2-3 ft.	\$.60
3-4 ft.75
4-5 ft.80

PERSIMMONS

TANE-NASHI. Large to very large fruit. Bright red when ripe. Yellow flesh and seedless. Prolific and bearing quite young. Probably the best variety.

FUYUGAKI. Tomato shaped fruit, medium to large, deep red skin and light flesh. Good keeper.

2 to 3 ft.	\$.75
3 to 4 ft.90
4 to 5 ft.	1.00
5 to 6 ft.	1.50
6 to 8 ft.	2.00



PERSIMMONS

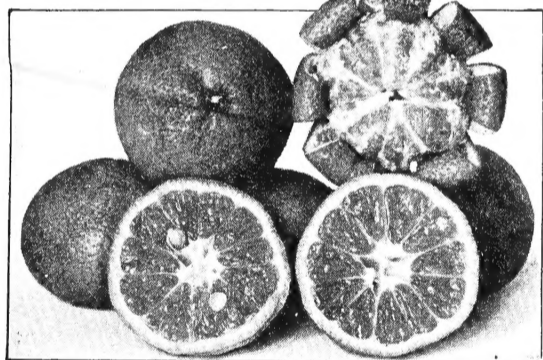
PEARS

BALDWIN. Good flavor, vigorous grower. Ripens in August. Said to be blight resistant.

KEIFFER. The well known cooking pear and one of the leading commercial varieties.

PINEAPPLE. Has a distinct and pleasing odor resembling that of a pineapple. One of the best for the deep South as it is practically blight proof.

	Each
3-4 ft.	\$1.00
4-5 ft.	1.50
5-7 ft.	2.00



Satsuma Oranges. See page 27

SATSUMA ORANGES

OWARI. Deep orange with smooth rind. Almost seedless. Vigorous and hardy tree.

	Each
18-24 in.	\$1.00
2- 3 ft.	1.50



Delicious



SEN. CLARKE PEAR

NEW "SEN. CLARKE" PEAR

The Sen. Clarke is a NEW pear which makes a stocky tree with a good spread and bears generous crops of pears weighing from ½ pound up to 1 pound. The fruit is fine grained, juicy and sweet, a really fine eating pair for the South that is very blight resistant. We have been looking for such a pear for a long time and at last have one which we believe meets the requirements. There are only a few hundred trees available this season so place your order early.

Prices Sen. Clarke Pear

	Each
2-3 ft.	\$1.50
3-4 ft.	2.00
4-5 ft.	2.50

MAHAN PECANS

MAHAN PECAN

You can grow the world's finest pecans in your own back yard.

Mahan trees are vigorous with extra large leaves and make as fine a shade tree as any you can plant. In addition they start bearing the second or third year and rapidly increase in production so that in a short time you will have all the fine pecans you want for home use and a surplus to sell.

With each order for Mahan trees we send full instructions for proper planting and care that will insure your getting the best and quickest crops.

Plant a few Mahan trees in your yard and you will certainly be proud of the enormous pecans they produce.

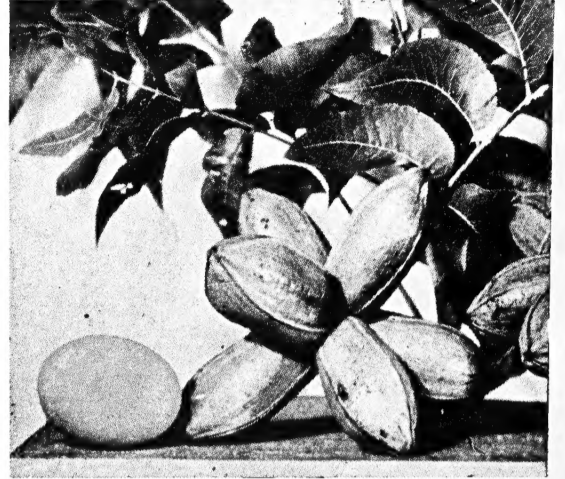
Every Mahan tree is guaranteed to grow, and any that might, for any reason die within one year of shipping date, will be replaced f. o. b. Monticello for only \$1.00.

PRICES ON MAHAN TREES F. O. B. MONTICELLO

	Each
1-2 ft.	\$2.00
2-3 ft.	3.00
3-4 ft.	4.00
4-5 ft.	5.00
5-6 ft.	5.50
6-8 ft.	6.00

Proper Distances For Planting

Satsuma Oranges	18 to 20 ft. each way
Peaches	18 to 20 ft. each way
Japan Persimmons	15 to 20 ft. each way
Pears	25 to 30 ft. each way
Pecans	50 to 60 ft. each way



● The Georgia Coastal Plain Experiment Station recently completed a 12-year test they made of sixteen of the most popular varieties of pecans. The results of this test are shown in the table at the right.

Note that the MAHAN not only led the field, but was WAY OUT IN FRONT—not only in the size of nuts, but in the average annual yield. Isn't this convincing proof to you that the MAHAN is the pecan you've been looking for?



MAHAN PECANS (Actual Size)

GEORGIA COASTAL PLAIN EXPERIMENT STATION PECAN VARIETY TEST

FIRST TWELVE YEARS IN TRIAL GROUNDS

VARIETY	Date Harvested	Age of Tree Yrs.	No. of Crop Yrs.	No. Crops Produced	No. Nuts per Lb.	% Kernel	Av. Annual Yield per Tree Over Bearing Period	Total Yield per Tree Over Entire Bearing Period	
								Lbs. Nuts	Lbs. Kernel
Mahan	10-29	12	10	9	47	51	12.47	124.78	63.64
Moore	10-10	12	10	10	84	44	10.31	103.13	45.38
Success	10-16	12	9	9	65	49	11.07	99.67	48.84
Moneymaker	10-18	12	10	10	58	43	9.53	85.80	36.89
Farley	11-6	12	9	9	62	53	9.34	84.14	44.59
Bradley	11-5	12	9	9	70	44	7.91	71.19	31.32
Tesche	11-1	12	9	9	72	43	7.81	70.30	30.23
Big Z	11-2	12	9	8	64	49	7.24	65.20	31.95
Oklahoma	10-20	12	8	8	60	45	7.79	62.35	28.06
Schley	10-20	12	8	8	80	55	6.91	55.30	30.41
Curtiss	10-26	12	8	8	102	54	5.38	43.05	23.25
San Saba	10-18	11	7	6	97	57	5.81	40.67	23.18
Pabst	11-4	12	8	7	65	44	4.92	39.39	17.33
Western Schley	10-14	12	8	8	68	55	4.33	38.68	21.27
Williamson	10-14	12	8	8	63	51	4.29	34.35	17.52
Stuart	10-29	12	8	8	56	45	3.82	30.56	13.75

SPECIAL PREPAID EVERGREENS

Gardenia Florida—
Sweet scented Cape Jasmine

Wax Leaf Ligustrum—
Glossy leaf deep green variety

Nandina Domestica—
Red berried, red leaves in winter

Sweet Viburnum—
Large medium green leaves sweet white flowers

Virburnum Suspensum—
Blooms very early spring, leathery leaves
12 to 18 inch—Standard Size
1.00 each—6 for 5.50 Prepaid
18 to 24 inch—Landscape Size
1.50 each—6 for 8.25 Prepaid

We are offering this year some of the best and most popular evergreens, shipped to you prepaid, so that on this offer the price includes transportation. These will be shipped bare-root, with the roots puddled in a thick mud to preserve the moisture, and then packed in damp moss. Pictures and descriptions of these varieties will be found in the catalog under the same names where they are listed Balled and Burlapped.

Excelsa Arbor Vitae.....	Broad Pyramidal Type
Pyramidal Arbor Vitae.....	Narrow Pyramidal Type
Spiny Greek Juniper.....	Blue Green Semi-Dwarf
Pfizer Juniper.....	Spreading Green Type
Podocarpus Maki.....	Medium Yew
Cedar Cypress.....	Columnar Shape—Tall Growing

Above 6 varieties:

12 to 18 inch—Standard Size.....	1.50 each—6 for	8.50 Prepaid
18 to 24 inch—Landscape Size.....	2.25 each—6 for	13.25 Prepaid

THE MAHAN PECAN

IS PROPAGATED AND OFFERED EXCLUSIVELY BY THE

MONTICELLO NURSERY CO., Monticello, Florida